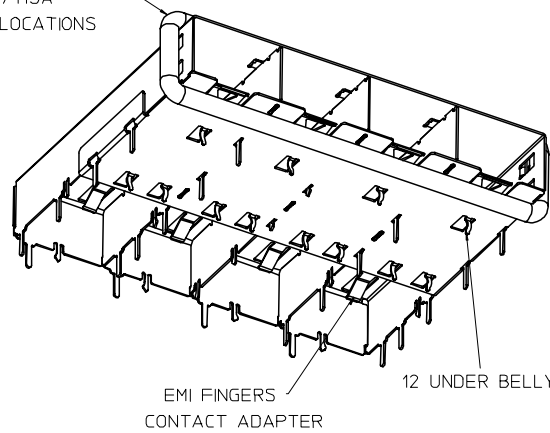


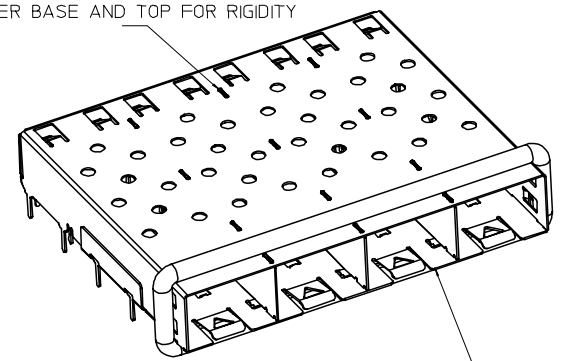
360° ELASTOMER GASKET COMPLIES WITH (SFP) MSA BOARD AND BEZEL LOCATIONS

INNER WALL TABS ARE COINED OVER BASE AND TOP FOR RIGIDITY

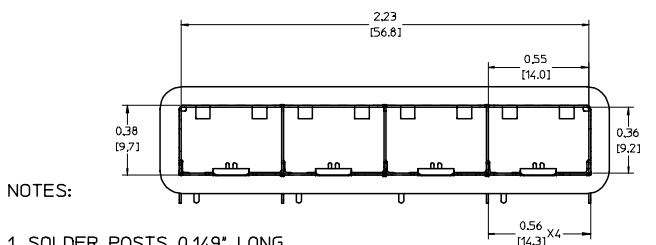


EMI FINGERS CONTACT ADAPTER

12 UNDER BELLY EMI PINS



DIMENSIONS OF EACH INNER CAGE DESIGNED TO FUNCTION WITH SMALL FORM-FACTOR PLUGGABLE (SFP) TRANSCEIVER

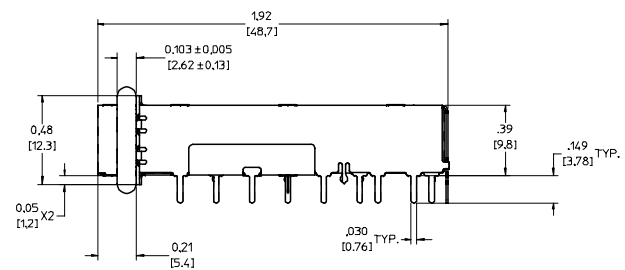


NOTES:

1. SOLDER POSTS 0.149" LONG.
 2. MATERIAL: COPPER ALLOY
PLATING: NONE
- NOTE: A NICKEL PLATED VERSION IS AVAILABLE.
REFER TO DOCUMENT SD-74728-421.

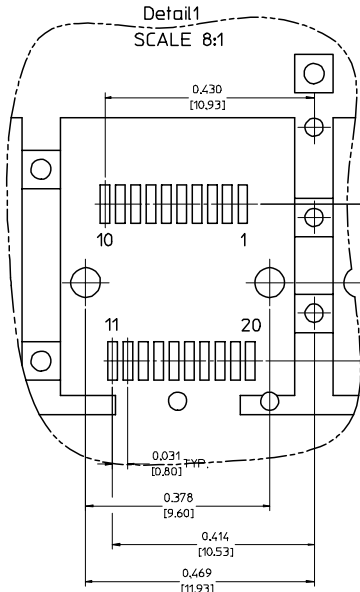
3. REFERENCE DOCUMENTS:
PRODUCT SPECIFICATION: PS-74728-000
COSMETIC SPECIFICATIONS: WI-HP-7-2774 AND WI-HPA-7-0093

4. THIS PART MEETS THE RESTRICTION OF HAZARDOUS SUBSTANCES IN ELECTRICAL AND ELECTRONIC EQUIPMENT (ROHS) DIRECTIVE (2002/95/EC).



ENTER DESCRIPTION EC NO. USY2006-0079 DRAWN BY: JORWANSI MONSON 2006/01/17 CHECKED BY: CHFKBRUSSELL 2006/01/28 APPR: BRUSSELL 2006/01/28	QUALITY SYMBOLS	GENERAL TOLERANCES (UNLESS SPECIFIED)	DIMENSION STYLE	SCALE	DESIGN UNITS	THIRD ANGLE PROJECTION
	▽=0 ▽=0	mm INCH 4 PLACES ± --- ± --- 3 PLACES ± --- ± .005 2 PLACES ± 0.13 ± .01 1 PLACE ± 0.25 ± --- ANGULAR ± 1 °	IN/MM DRAWN BY: DATE KS IMONSO 2003/11/01 CHECKED BY: DATE BRUSSELL 2003/11/01 APPROVED BY: DATE BRUSSELL 2003/11/01	3:1	METRIC	TITLE 1X4 SFP GANGED CAGE ASSEMBLY W/ ELASTOMER GASKET, SOLDER POST MOLEX INCORPORATED
	DRAFT WHERE APPLICABLE MUST REMAIN WITHIN DIMENSIONS	MATERIAL NO. 739270412	DOCUMENT NO. SD-73927-412	SHEET NO. 1 OF 4		
		THIS DRAWING CONTAINS INFORMATION THAT IS PROPRIETARY TO MOLEX INCORPORATED AND SHOULD NOT BE USED WITHOUT WRITTEN PERMISSION				

PCB LAYOUT FOR SINGLE SIDE MOUNTING



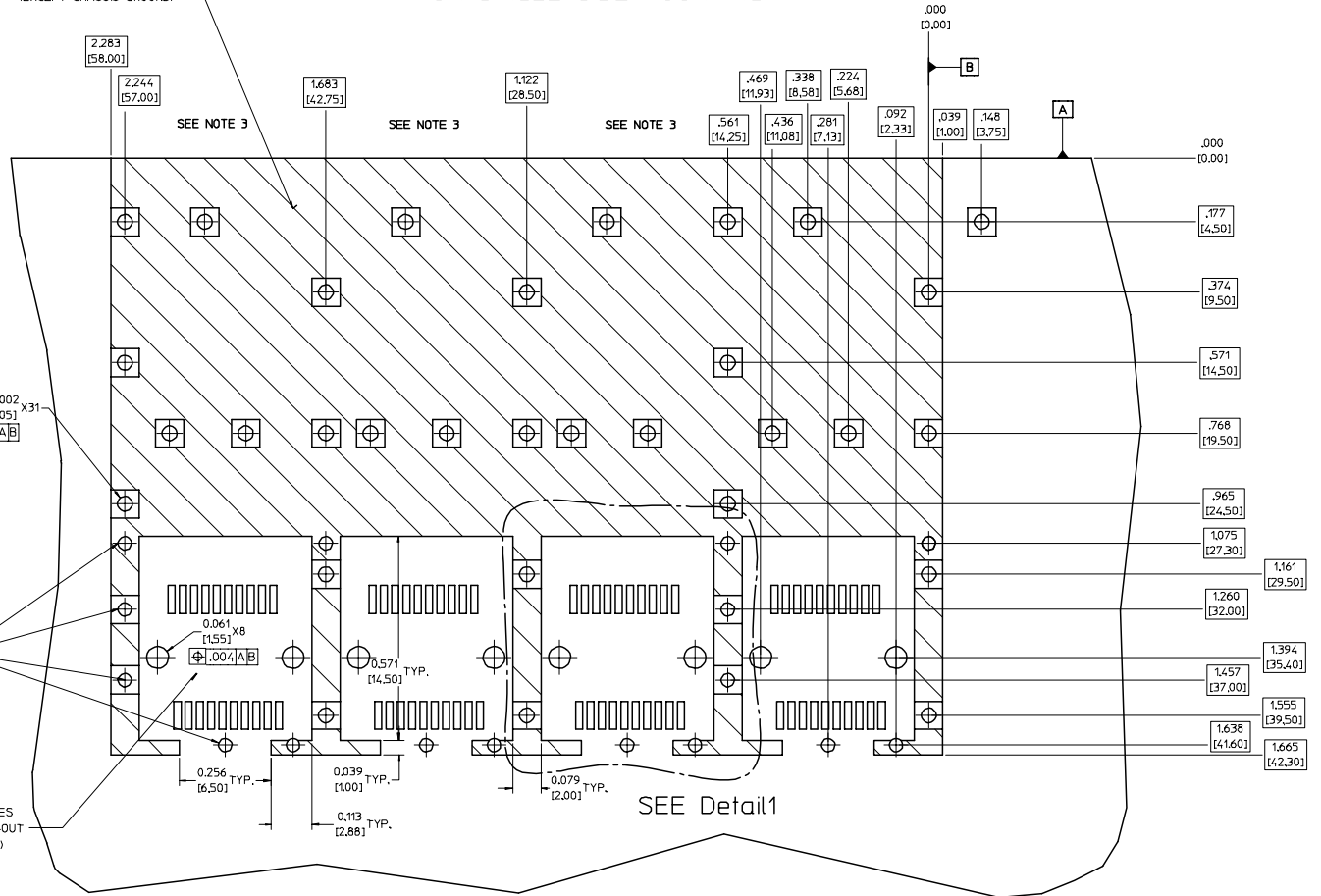
CROSS-HATCHED AREA DENOTES
COMPONENT AND TRACE KEEP-OUT
(EXCEPT CHASSIS GROUND)

$\phi 0.041 \pm 0.002$
[1.05 ± 0.05] X31
[0.004] [A] [B]

$\phi .037 \pm .002$
[0.95 ± 0.05] X16
[0.004] [A] [B]

SMALLER HOLE ON
THESE FOUR ROWS ONLY

THIS AREA DENOTES
COMPONENT KEEP-OUT
(TRACES ALLOWED)

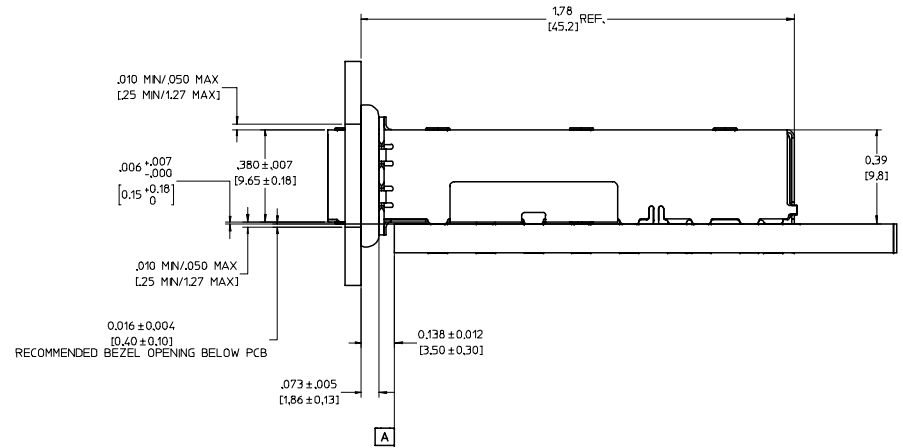
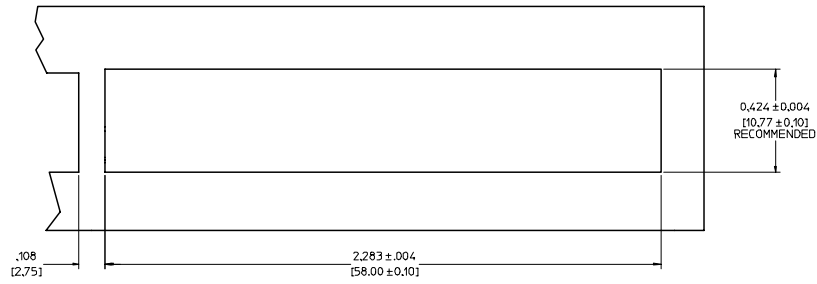


NOTES:

1. PADS AND VIAS GO TO CHASSIS GROUND, (34 PLACES).
RECOMMENDED PADS TO BE 2mm SQUARE.
2. PLATING OPTIONAL FOR THROUGH HOLES, (12 PLACES).
3. RECOMMENDED PLATING INCLUDES HASL, IMMERSION (GOLD, SILVER, OR TIN), AND OSP.
4. HOLE PATTERN REPEATS FOR EACH PORT,
SPACING BETWEEN PORTS IS 14.25mm.
5. CONNECTOR PAD LAYOUT PER SFP MSA. WILL ACCOMMODATE MOLEX
CONNECTOR SERIES 74441 OR EQUIVALENT.

ENTER DESCRIPTION EC NO: UST2006-0079 DRAWN BY: JORWANKS MONSON 2006/01/17 CHECKED BY: CHFCBRUSSELL 2006/01/28 APPR: BRUSSELL 2006/01/28	QUALITY SYMBOLS ▽=0 ▽=0	GENERAL TOLERANCES (UNLESS SPECIFIED) 4 PLACES ± --- ± --- 3 PLACES ± --- ± .005 2 PLACES ± 0.13 ± .01 1 PLACE ± 0.25 ± --- ANGULAR ± 1 °	DIMENSION STYLE IN/MM DRAWN BY: KS IMONSO DATE: 2003/11/01 CHECKED BY: BRUSSELL DATE: 2003/11/01 APPROVED BY: BRUSSELL DATE: 2003/11/01	SCALE: 6:1 DESIGN UNITS: METRIC THIRD ANGLE PROJECTION	TITLE: 1X4 SFP GANGED CAGE ASSEMBLY W/ ELASTOMER GASKET, SOLDER POST MOLEX INCORPORATED	MATERIAL NO: 739270412 DOCUMENT NO: SD-73927-412	SHEET NO: 2 OF 4	
	DRAFT WHERE APPLICABLE MUST REMAIN WITHIN DIMENSIONS		THIS DRAWING CONTAINS INFORMATION THAT IS PROPRIETARY TO MOLEX INCORPORATED AND SHOULD NOT BE USED WITHOUT WRITTEN PERMISSION					

BEZEL AND BOARD POSITION DIMENSIONS FOR SINGLE SIDE MOUNTING



ENTER DESCRIPTION EC NO: UST2006-0079 DRAWN BY: KSRWNS/IMONSO 2006/01/17 CHECKED BY: CHFK/BRUSSELL 2006/01/28 APPR: BRUSSELL 2006/01/28	QUALITY SYMBOLS ▽=0 ▽=0	GENERAL TOLERANCES (UNLESS SPECIFIED)		DIMENSION STYLE IN/MM		SCALE 4:1	DESIGN UNITS METRIC	THIRD ANGLE PROJECTION
		4 PLACES ± --- ± --- 3 PLACES ± --- ± .005 2 PLACES ± 0.13 ± .01 1 PLACE ± 0.25 ± --- ANGULAR ± 1 °	mm INCH	DRAWN BY KS IMONSO	DATE 2003/11/01	TITLE 1X4 SFP GANGED CAGE ASSEMBLY W/ ELASTOMER GASKET, SOLDER POST		
		DRAFT WHERE APPLICABLE MUST REMAIN WITHIN DIMENSIONS		CHECKED BY BRUSSELL	DATE 2003/11/01	MOLEX INCORPORATED		
		MATERIAL NO. 739270412		APPROVED BY BRUSSELL	DATE 2003/11/01	DOCUMENT NO. SD-73927-412	SHEET NO. 3 OF 4	

20 19 18 17 16 15 14 13 12 11 10 9 8 7 6 5 4 3 2 1

M

L

K

J

I

H

G

F

E

D

C

B

A

M

L

K

J

I

H

G

F

E

D

C

B

A

DATE	REV	CHANGES	COMMENTS
2003/11/11	1	PRELIMINARY DOCUMENT	N/A
2004/03/25	A	INITIAL RELEASE	N/A
2004/10/09	B	UPDATED VIEWS	DOCUMENT CHANGE ONLY
2005/10/07	C	ADDED PCB AND BEZEL DETAILS. UPDATED NOTES.	DOCUMENT CHANGE ONLY

ENTER DESCRIPTION EC NO: UST2006-0079 DRW: KS IMONSON 2006/01/17 CHK: CHUBRUSSELL 2006/01/28 APPR: BRUSSELL 2006/01/28 REV DESCRIPTION	QUALITY SYMBOLS ▽=0 ▽=0	GENERAL TOLERANCES (UNLESS SPECIFIED) <table border="1"> <tr> <th></th> <th>mm</th> <th>INCH</th> </tr> <tr> <td>4 PLACES</td> <td>± .---</td> <td>± .---</td> </tr> <tr> <td>3 PLACES</td> <td>± .---</td> <td>± .005</td> </tr> <tr> <td>2 PLACES</td> <td>± 0.13</td> <td>± .01</td> </tr> <tr> <td>1 PLACE</td> <td>± 0.25</td> <td>± .---</td> </tr> <tr> <td>ANGULAR</td> <td colspan="2">± 1 °</td> </tr> </table>		mm	INCH	4 PLACES	± .---	± .---	3 PLACES	± .---	± .005	2 PLACES	± 0.13	± .01	1 PLACE	± 0.25	± .---	ANGULAR	± 1 °		DIMENSION STYLE IN/MM	SCALE 1:1	DESIGN UNITS METRIC	THIRD ANGLE PROJECTION
		mm	INCH																					
	4 PLACES	± .---	± .---																					
	3 PLACES	± .---	± .005																					
2 PLACES	± 0.13	± .01																						
1 PLACE	± 0.25	± .---																						
ANGULAR	± 1 °																							
		DRAWN BY KS IMONSON	DATE 2003/11/01	TITLE 1X4 SFP GANGED CAGE ASSEMBLY W/ ELASTOMER GASKET, SOLDER POST																				
		CHECKED BY BRUSSELL	DATE 2003/11/01	MOLEX INCORPORATED																				
		APPROVED BY BRUSSELL	DATE 2003/11/01	MATERIAL NO. 739270412	DOCUMENT NO. SD-73927-412	SHEET NO. 4 OF 4																		
DRAFT WHERE APPLICABLE MUST REMAIN WITHIN DIMENSIONS				THIS DRAWING CONTAINS INFORMATION THAT IS PROPRIETARY TO MOLEX INCORPORATED AND SHOULD NOT BE USED WITHOUT WRITTEN PERMISSION																				

19 18 17 16 15 14 13 12 11 10 9 8 7 6 5 4 3 2 1